

Ki-Do Uniform Purchasing

Please fill out the information below to order a jacket and/or pants. Basic white uniforms are usually available in a day, while other specific uniforms may take 1-2 weeks.

NOTE: The privilege to wear the different styles and colors of uniforms, like belt ranks, are earned and aids the instructors to identify higher ranking students to provide more efficient instruction. **See side chart for the appropriate style/color uniform per belt rank.**

Date:

Student:

Belt Rank: Check box next to student's current rank on side chart →

Jacket Ordering

Jacket Style: White-\$22 Red-\$40 Blue-\$40 Degree-\$54

Jacket Size: Child 2-4 (000) Child 4-6 (00) Child 6-8 (0)
 Child 8-10 (1) Child 10-12 (2)
 Adult S (3) Adult M (4) Adult L (5)
 Adult XL (6) Adult XXL (7)

Pants Ordering

Pants Style: White-\$22 Red-\$28 Blue-\$28 Black-\$32 Degree-\$48

Pants Size: Child 2-4 (000) Child 4-6 (00) Child 6-8 (0)
 Child 8-10 (1) Child 10-12 (2)
 Adult S (3) Adult M (4) Adult L (5)
 Adult XL (6) Adult XXL (7)

Pants Info: **Pants Waist Measurements (relaxed to stretched):**
 17-24" (000), 19-27" (00), 22-30" (0), 24-33" (1), 26-36" (2), 28-39" (3),
 30-41" (4), 31-44" (5), 33-46" (6), 34-48" (7).

Pants Outseam Measurements (waist to heel):
 23" (000), 26" (00), 30" (0), 33" (1), 36" (2), 39" (3), 42" (4), 44" (5),
 46" (6), 48" (7).

Payment

Method: Charge to my account on file. I will pay by other method.

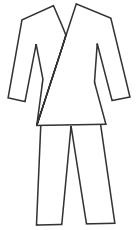
Special Instructions



Ki-Do Karate, Inc. • www.ki-dokarate.com
 150 Woodcrest Drive • Highland IL 62249 • 618-654-KICK (5425)
 529 North 1st Street • Breese IL 62230 • 618-526-8272

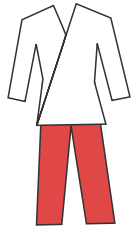
White Jacket & White Pants

- White Belt
- White-Yellow
- White-Orange
- White-Green



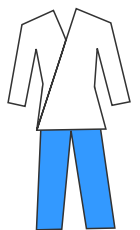
White Jacket & Red Pants

- White-Blue
- Yellow-White
- Orange-White
- Green-White



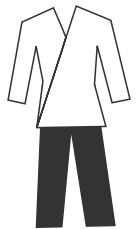
White Jacket & Blue Pants

- Blue-White
- Purple-White
- Red-White
- Brown-White



White Jacket & Black Pants

- White-Black
- Yellow-Black
- Orange-Black
- Green-Black



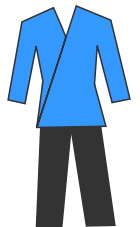
Red Jacket & Black Pants

- Blue-Black
- Purple-Black
- Red-Black
- Brown-Black



Blue Jacket & Black Pants

- Brown/Red
- Black/Red
- Black/Brown



Degree Uniform

- Black-Yellow
Through
3rd Degree

